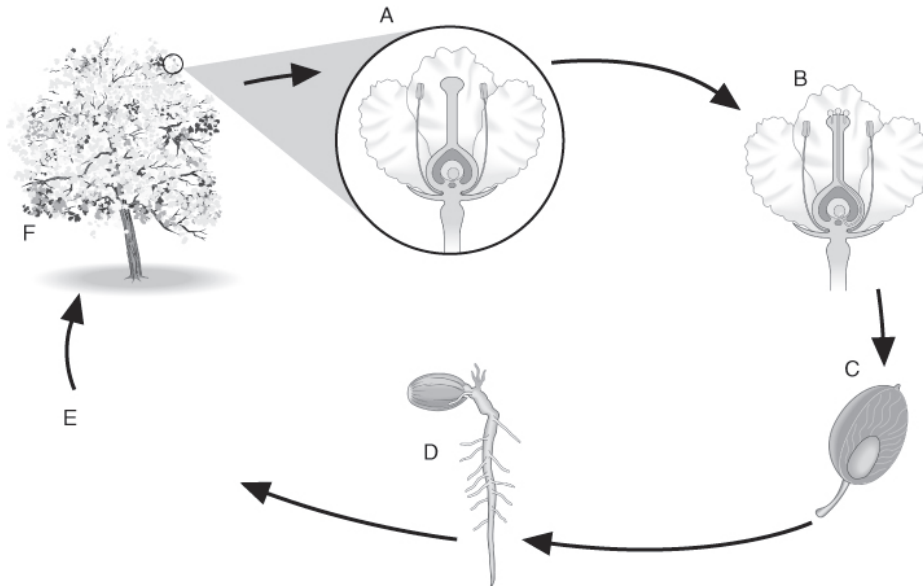


Name \_\_\_\_\_ Class \_\_\_\_\_ Date \_\_\_\_\_

1 The drawing shows the life cycle of a plum tree.



(a) Draw a diagram of the missing stage (part E) on the life cycle drawing.

(1)

(b) Draw lines to match each stage of the life cycle with the word describing what happens at that stage.

| Stages of life cycle |
|----------------------|
| A                    |
| A to B               |
| B                    |
| C                    |
| C to D               |
| D                    |

| What happens at that stage |
|----------------------------|
| fertilisation              |
| flowering                  |
| fruit formation            |
| germination                |
| pollination                |
| seed dispersal             |

(3)

(c) Which process in the plum tree life cycle is the same in humans? Tick **one** box.

**A** pregnancy

**B** puberty

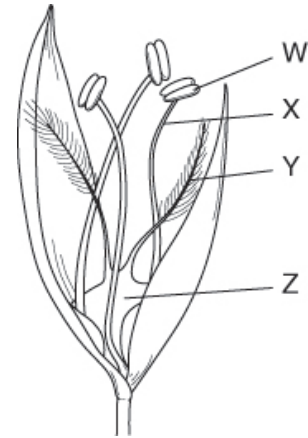
**C** fertilisation

**D** fruiting

(1)

**(Total for Question 1 = 5 marks)**

**2** Look at the diagram of the grass flower.  
Complete the table to show the names of the parts of the flower and what each part does.



| Part | Name of part | What the part does |
|------|--------------|--------------------|
| W    |              |                    |
| X    |              |                    |
| Y    |              |                    |
| Z    |              |                    |

**(Total for Question 2 = 4 marks)**

3 Plants are in the plant kingdom.

(a) Name **one** other kingdom.

\_\_\_\_\_ (1)

Here are descriptions of two groups in the plant kingdom.

| <b>Group P</b>    | <b>Group Q</b>    |
|-------------------|-------------------|
| Produce seeds     | Produce seeds     |
| Have flowers      | Have cones        |
| Have leaves       | Have leaves       |
| Have xylem tissue | Have xylem tissue |

(b) Give **one** difference between Group P and Group Q.

\_\_\_\_\_ (1)

(c) Suggest **one** way Group P could be divided into smaller groups.

\_\_\_\_\_ (1)

(d) One type of plant in group P is called *Ranunculus acris*. What genus does this plant belong to?

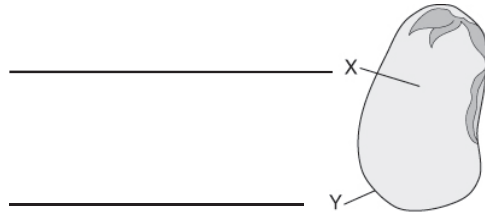
\_\_\_\_\_ (1)

(e) Give **one** reason why using scientific names is useful.

\_\_\_\_\_  
\_\_\_\_\_ (1)

**(Total for Question 3 = 5 marks)**

4 The drawing shows a seed.



(a) Complete the drawing by writing labels for X and Y.

(1)

(b) Which part of a plant grows out of the seed first? Tick **one** box.

**A** leaf

**B** flower

**C** stem

**D** root

(1)

(c) What resources does the seed need for growth to happen?

---

---

---

(2)

(d) What type of reproduction produces seeds? Tick **one** box.

**A** asexual

**B** sexual

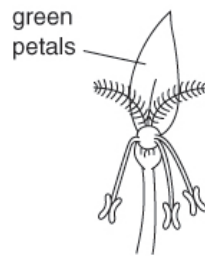
**C** external

**D** internal

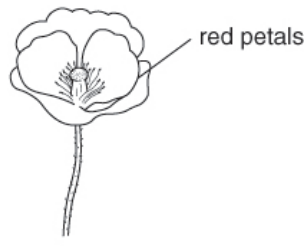
(1)

**(Total for Question 4 = 5 marks)**

5 The diagrams show two flowers, M and N.

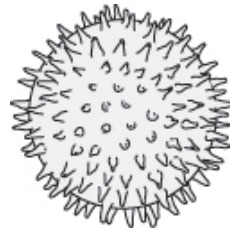


Flower M



Flower N

The magnified pollen grain shown below comes from flower N.



(a) Explain how you can tell that the pollen grain is from flower N and not from flower M.  
Give **two** reasons.

---

---

(2)

(b) Give **one** way a pollen grain from flower N would be different from a pollen grain from flower M.

---

(1)

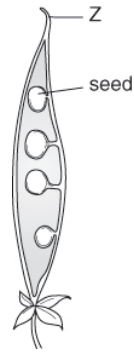
(c) What part of a pollen grain is needed for fertilisation? Tick **one** box.

- A egg
- B male gamete
- C ovule
- D stamen

(1)

**(Total for Question 5 = 4 marks)**

6 The drawing shows a pea pod. The seed, called a pea, is labelled.



(a) What part of a flower forms the seed? Tick **one** box.

**A** ovule

**B** petal

**C** pollen

**D** sepal

(1)

(b) What part of a flower was part Z? Tick **one** box.

**A** petal

**B** sepal

**C** ovule

**D** stigma

(1)

Usually a pea pod stays on the plant, slowly dries and the pod twists. Suddenly the pod splits open and the seeds burst out.

(c) Give **two** reasons why the plant does this.

---

---

---

(2)

(d) Describe **one** other way seeds can move away from a parent plant.

---

---

(1)

**(Total for Question 6 = 5 marks)**

**7** The number of honey bee colonies in the USA has decreased by about 40% over the past 40 years. Explain why this is worrying for farmers in the USA.

---

---

---

**(Total for Question 7 = 2 marks)**