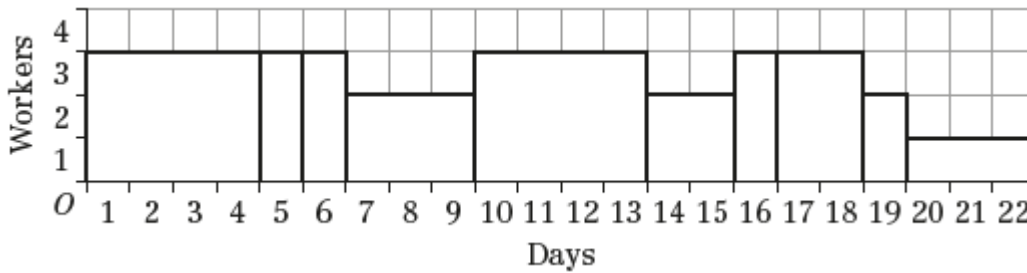


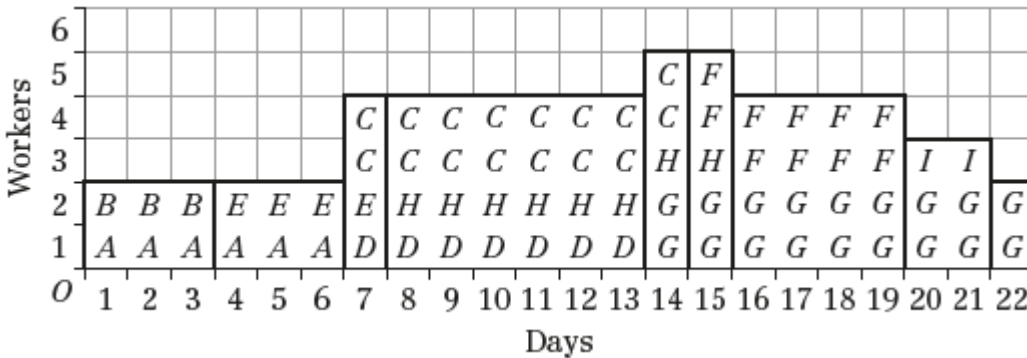
Critical path analysis 8H

1 a



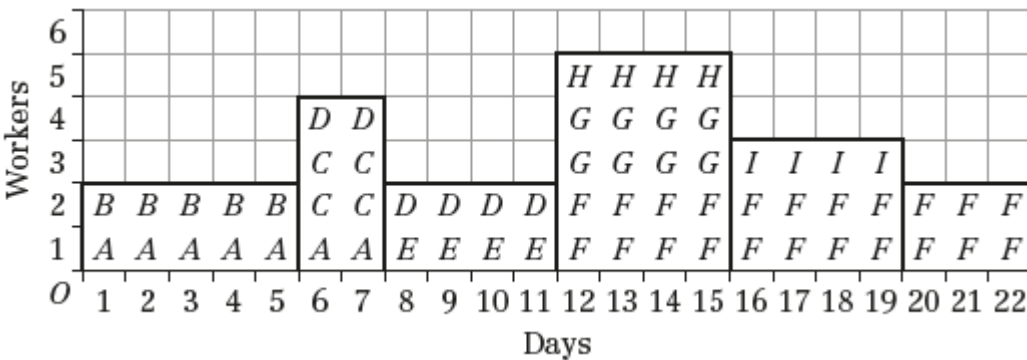
b The resource histogram shows that 3 workers are required to complete the project in a time of 22 days if each activity starts at its early time.

2 a



b The resource histogram shows that 5 workers are required to complete the project in a time of 22 days if each activity starts at its early time.

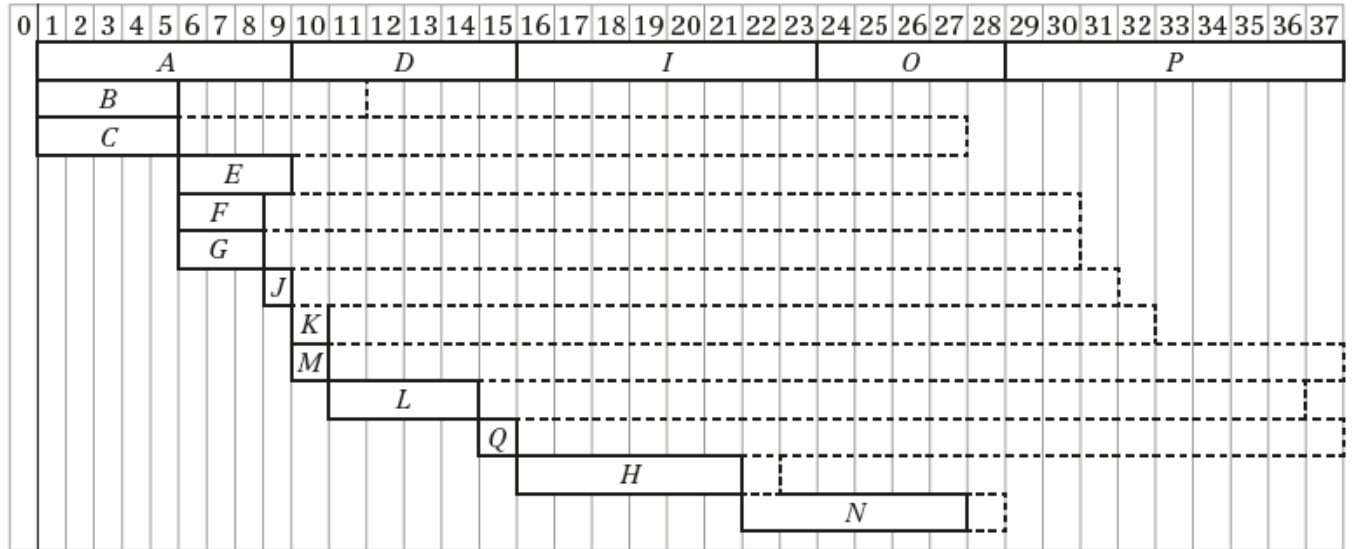
3 a



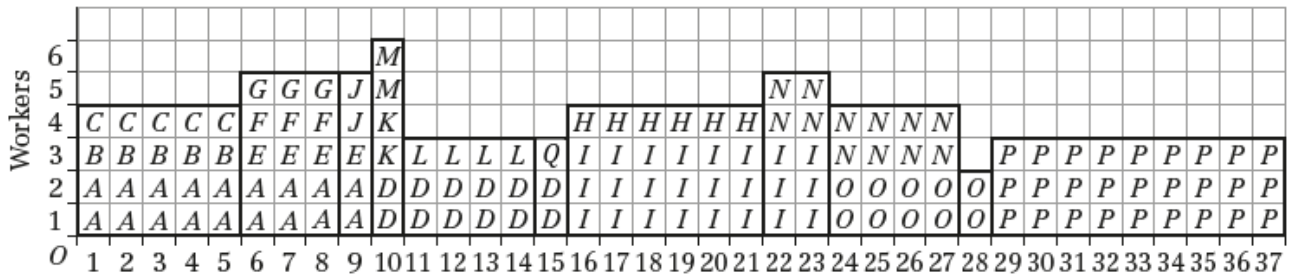
The resource histogram shows that 5 workers are needed.

b To reduce the number of workers to 4 we must consider delaying activity *H* until day 16, project does not need to be extended.

4 a



b If every activity starts at the earliest possible time then 6 workers are required.



c Total float on activity *N* is only 1 hour, so delaying it by 2 hours would cause the project to be delayed.

d 49 hours